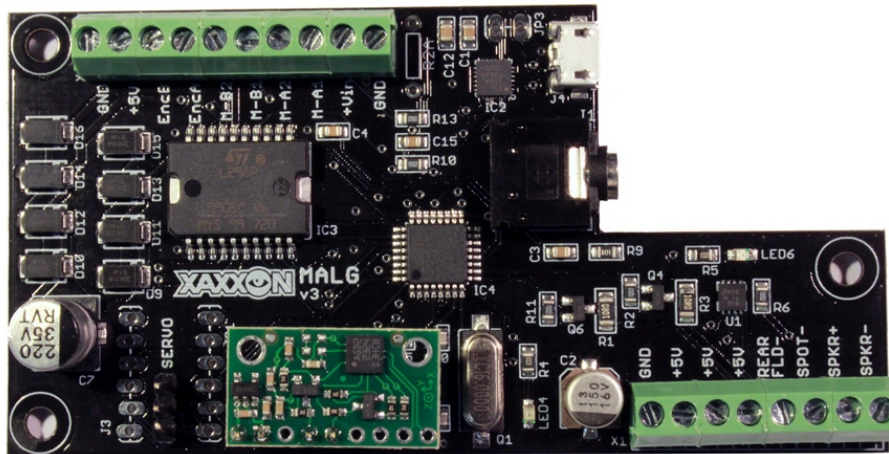


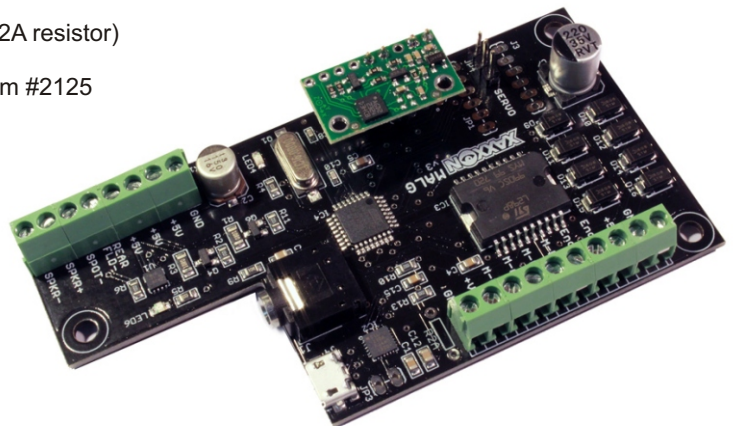
MALG PCB v3

Motors Audio Lights Gyro
 Arduino Compatible Robot Microcontroller Board



Features/Specifications:

- Atmel ATMEGA 328P microcontroller, 16 Mhz
- 5V primary power via any +5V terminal, or USB (optional via JP3 jumper) 5.5V absolute maximum
- L298 H-bridge motor controller
- Motor rotational encoder input (quadrature optional, requires R2A resistor)
- Servo header, 3 pin
- Gyro ST L3GD20 3 axis, on included daughter board Pololu item #2125
- CP2104 USB-UART bridge
- Micro-B USB female input
- Audio amplifier TPA2005 class-D mono
- 3.5mm audio input
- +/- speaker output: 8 Ohm, 1.4W max
- 2x high-intensity LED output PWM control
- Firmware can be uploaded via Arduino IDE as duemilanove/328P
- Overall size: 99mm x 51mm [3.9in x 2.0in]
- RoHS compliant



Power Requirements:

- 5V power required for microcontroller, other component logic, LEDs, audio, motor encoder
- Use any +5V screw terminal input (eg., obtain 5V regulated power from host PC), or USB input
- USB 5V input ships disconnected, requires JP3 jumper (not diode protected). USB 5V from host PC typically 500mV max, up to 2A auxiliary 5V external power recommended if using high power LEDs and/or audio
- Motors: separate +V power required via "+Vin" terminal. 46V max, 36W continuous, 60W peak

Gyro Daughter Board

- Typically ships with Pololu L3GD20 #2125 gyro daughter board inserted into 5-pin JP2 female header, mounted component side up
- Also accepts other Pololu gyros and 6/9 axis IMUs inserted into 4-pin J2 female header, mounted component side down

More details on following page

Schematic and example firmware code available for download at:
www.xaxxon.com/xaxxon/malgv3



Xaxxon MALG PCB (v3) - Board Connection Diagram

