

### Specifications, Min/Max Values:

- 9-16V 3A system power out (max 3A continuous/5A peak)
  - System boards, including ATX & Mini-ITX systems should have compatible wide input power capability, or use suitable boost/buck DC-DC regulator
- DC wall power in: 15V nominal (14.5 minimum, 16.5V absolute maximum) 4A minimum
- Accepts 3 cell (11.1V) Lithium Polymer battery (Turnigy, Zippy brands currently supported)
- Integrated charging at 1.0Ah, cell balancing
- JST-XH balance connector (4 pin for 3S battery)
- Battery input/output current monitoring (hall effects sensor)
- Precision voltage reference, individual pack cells and system power
- Atmel ATmega 328P microcontroller
- USB serial interface with full battery monitoring/statistics output
- Mini-B USB female connector
- Low battery safety auto system power shutoff (reset using tact-switch or applying wall power)
- Parasitic battery drain 2.58mA
- Overall size: 99mm x 51mm [3.9in x 2.0in]
- RoHS compliant

**NOTE:** Board has continuous parasitic battery drain of 2.58mA even when powered down; therefore it is important to **disconnect battery when system is not in use**, to avoid damaging the battery.

See following page for typical wiring diagram

### Links:

Overview:

<http://www.xaxxon.com/xaxxon/power>

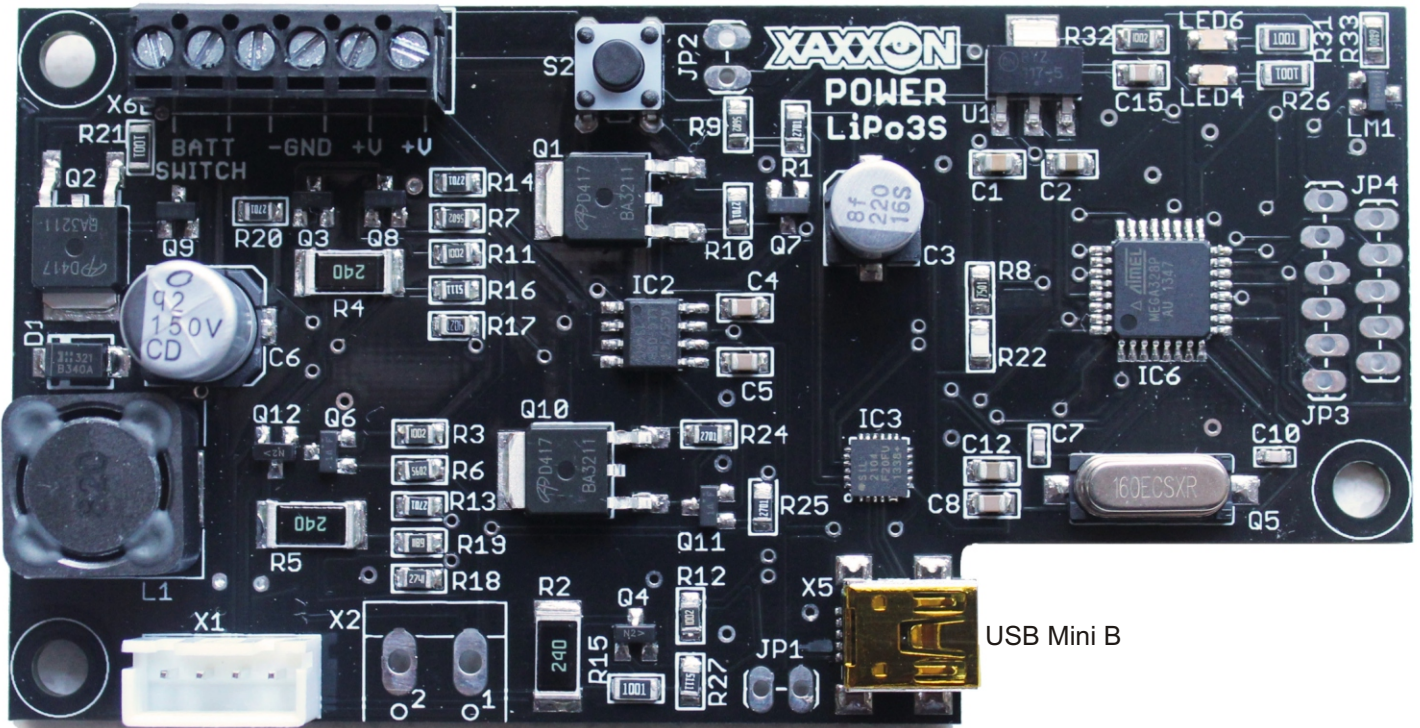
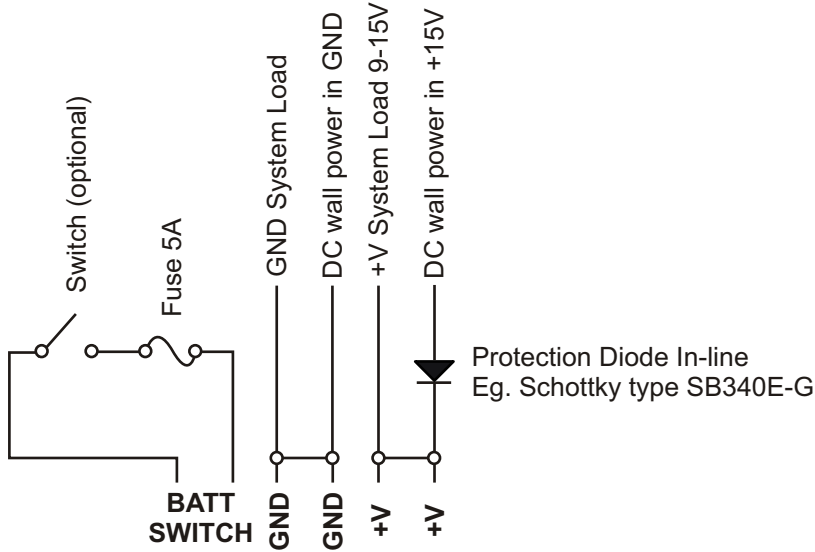
Description of Error Codes, Serial Commands and Output:

<http://www.xaxxon.com/documentation/view/oculus-prime-power-error-codes>



# Xaxxon Power LiPo3S PCB

## Typical Wiring Diagram



**BATTERY** GND  
JST Connector  
Balance leads

BATT GND  
BATT +V  
(typically unused)

JP1  
USB +5V  
enable  
(typically unused,  
unprotected)

USB Mini B